



Service Tools
Tools for the assembly of seals



Advantages

- Optimally suitable special tools for the assembly and disassembly of seals for hydraulic elements

Tools

- Picker set 5
- Calibration sleeves for external seals
- Calibration mandrels for internal seals

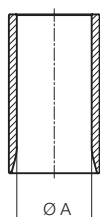
Picker set 5



Picker set for seal disassembly, contains 5 special tools in an envelope bag. With these differently shaped, hook-shaped tools, seals can be removed from the sealing grooves. The tools are specially rounded at the tip to protect the seals.

Part no. 9001900

Calibration sleeves for external seals



Precisely fitting sleeves for the corresponding exterior diameter with special inlet beaks for calibrating newly mounted external seals. The tool is used to return previously expanded seals to their original seal diameter. When assembling the hydraulic element, the calibration sleeve prevents subsequent assembly damage caused by seals protruding from the groove.

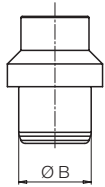
Ø A [mm]	Part no.
10	9001 100
12	9001 127
14	9001 130
16	9001 103
20	9001 106
23	9001 133
25	9001 109
26	9001 136
28	9001 139

Ø A [mm]	Part no.
32	9001 112
33	9001 142
35	9001 145
40	9001 115
50	9001 118
52	9001 148
56	9001 151
63	9001 121

SERVICE Tools

Tools for the assembly of seals

Changeable calibration mandrels for internal seals



Combination tool for seal and wiper assembly

Precisely fitting mandrel for the corresponding interior diameter with special inlet beaks for calibrating newly mounted interior seals. The tool is used to return seals previously expanded for assembly to their original seal diameter. This process prevents subsequent sealing or assembly damage caused by seals protruding from the groove during the assembly of the hydraulic element.

A special stop surface is available for the assembly of a wiper which must be pressed into the groove on the element head. With this surface, the wiper can be safely inserted into the groove.

Attention:

Can only be used in combination with the holder for changeable calibration mandrels. The holder is needed only once and fits for all changeable calibration mandrels.

Ø B [mm]	Part no.	Ø B [mm]	Part no.
10	9001 203	32	9001 215
16	9001 206	40	9001 218
20	9001 209	50	9001 224
25	9001 212	63	9001 227

Holder for changeable calibration mandrels



Holder for sealing and wiper tool

The basic tool for setting the wipers is required as a basic tool for every changeable calibration mandrel. Suitable for all changeable calibration mandrels.

Part no. 9001 200

Hydraulic tool case "Comfort 31"



Calibration and assembly tools:

17 calibration sleeves, 8 exchangeable calibration mandrels plus holder, Picker set 5, instructions

Part no. 9001 940

Content:

1. Calibration sleeves for piston seals

1 x size 10 - Part no. 9001 100	1 x size 32 - Part no. 9001 112
1 x size 12 - Part no. 9001 127	1 x size 33 - Part no. 9001 142
1 x size 14 - Part no. 9001 130	1 x size 35 - Part no. 9001 145
1 x size 16 - Part no. 9001 103	1 x size 40 - Part no. 9001 115
1 x size 20 - Part no. 9001 106	1 x size 50 - Part no. 9001 118
1 x size 23 - Part no. 9001 133	1 x size 52 - Part no. 9001 148
1 x size 25 - Part no. 9001 109	1 x size 56 - Part no. 9001 151
1 x size 26 - Part no. 9001 136	1 x size 63 - Part no. 9001 121
1 x size 28 - Part no. 9001 139	

2. Holder for changeable calibration mandrels Part no. 9001 200

3. Changeable calibration mandrels

1 x size 10 - Part no. 9001 203	1 x size 32 - Part no. 9001 215
1 x size 16 - Part no. 9001 206	1 x size 40 - Part no. 9001 218
1 x size 20 - Part no. 9001 209	1 x size 50 - Part no. 9001 224
1 x size 25 - Part no. 9001 212	1 x size 63 - Part no. 9001 227

4. Picker set 5 Part no. 9001 900