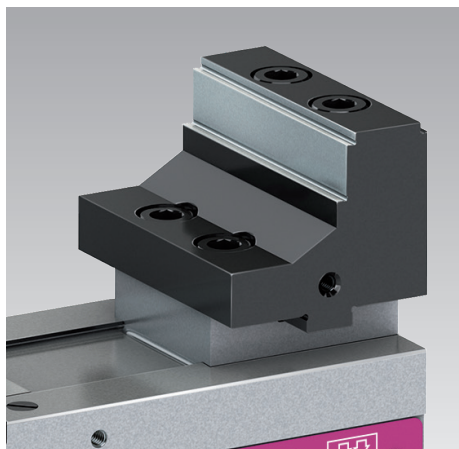




Accessories for Workholding Systems SCS

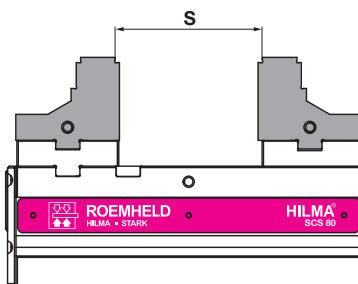
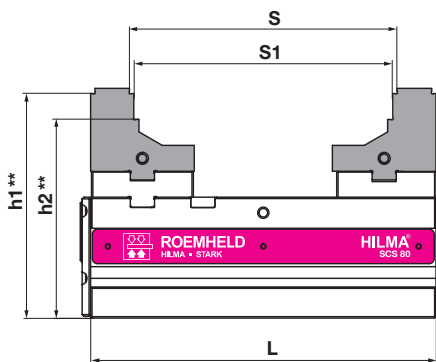
Clamping jaws and accessories for mounting, positioning and operation

Clamping jaws

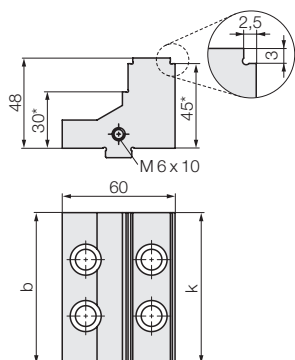


Scope of delivery - Clamping jaws

All SCS workholding systems are delivered without clamping jaws. The clamping jaws are to be ordered separately as accessories. All clamping jaws are supplied with fixing screws.

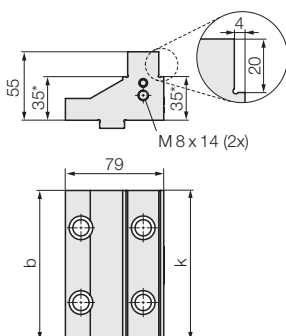


- S:** Clamping range upper step
- S1:** Clamping range lower step
- h1/h2:** Height of support
- L:** Length of the base



Fine step reversible jaws for SCS 80
hardened and ground

Type	Part no.	b	k	h1**	h2**	L = 156		L = 200	
						S	S1	S	S1
SCS 80	946726901	50	25	130	115	6-111	71-106	6-155	71-150
SCS 80	946726902	50	50	130	115	6-111	71-106	6-155	71-150
SCS 80	946726903	80	80	130	115	6-111	71-106	6-155	71-150

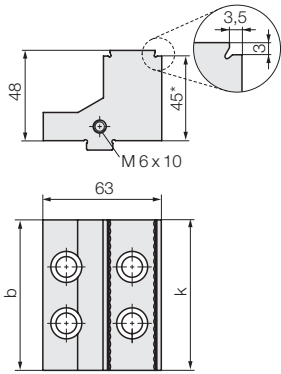


Fine step reversible jaws for SCS 120
hardened and ground

Type	Part no.	b	k	h1**	h2**	L = 250		L = 350	
						S1	S1	S1	S1
SCS 120	946736901	84	40	-	135	9-200		9-300	
SCS 120	946736902	84	84		135	9-200		9-300	
SCS 120	946736903	120	120		135	9-200		9-300	

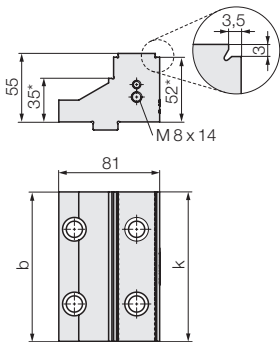
* Tolerance ±0.01 mm
** Tolerance ±0.02 mm
All dimensions in [mm]

Accessories Clamping jaws



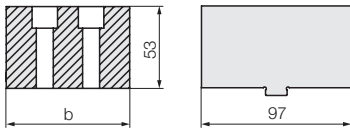
Special grip jaws for SCS 80 for maximum retention force at high cutting forces

Type	Part no.	b	k	h1**	h2**	L = 156		L = 200	
						S	S	S	S
SCS 80	946726941	50	25	130	–	8–107	8–151		
SCS 80	946726942	50	50	130	–	8–107	8–151		
SCS 80	946726943	80	80	130	–	8–107	8–151		



Special grip jaws for SCS 120 for maximum retention force at high cutting forces

Type	Part no.	b	k	h1**	h2**	L = 250		L = 350	
						S	S1	S	S1
SCS 120	946736941	84	40	152	135	8–195	89–188	8–295	89–288
SCS 120	946736942	84	84	152	135	8–195	89–188	8–295	89–288
SCS 120	946736943	120	120	152	135	8–195	89–188	8–295	89–288



Soft jaw for milling workpiece contours

Type	Part no.	b	Material
SCS 80	946726932	80	Steel C 45
SCS 80	946726933	80	Aluminium
SCS 120	946736932	120	Steel C 45
SCS 120	946736933	120	Aluminium

* Tolerance ± 0.01 mm
 ** Tolerance ± 0.02 mm
 All dimensions in [mm]

Accessories for mounting, positioning and operation

Mounting and positioning

Positioning pins
stepped for slot table, set of 2 off



Type	Part no.	Ø [mm]
SCS 80 / SCS 120	939184211	12/12
SCS 80 / SCS 120	939184221	12/16

Clamps
with M10 fixing screws, set



Type	Part no.	1 set = ... off
SCS 80	939174011	4
SCS 120	939174061	6

Double clamps
with M10 fixing screws, set



Type	Part no.	1 set = ... off
SCS 80	939174021	2
SCS 120	939174071	3

T-nut
for clamping on machine tables, set of 6 off



Type	Part no.	Slot [mm]
SCS 80	939174221	14
SCS 120	939174241	18

Workpiece stop
for fixation to the base or to the jaws



Type	Part no.	Thread
SCS 80	939184111	M6
SCS 120	939184121	M8

Operation

Torque wrench



Type	Part no.	Torque [Nm]
SCS 80	937926600	5 – 60
SCS 120	937926610	20–120

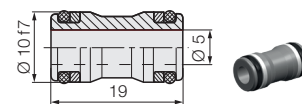
Socket
for torque wrench



Type	Part no.	SW
SCS 80	131240024	12, 3/8"
SCS 120	131240023	14, 1/2"

Hydraulic connection

Plug-type connector
for line-free connection to a hydraulic pressure generator, including seals, 1 off



Type	Part no.	for bore hole
SCS 80 / SCS 120	805300023	Ø 10 H7 x 10 mm deep